

TALIS



T+A

The TALIS[®] Loudspeakers

TALIS[®] loudspeakers are built for audiophile music lovers who are also extremely demanding in terms of design and workmanship. Even at first glance the anodised surfaces with their brushed, high-gloss finish make the heart of anyone who appreciates fine design beat faster.

For many years now the TALIS[®] name has been a byword for speakers crafted from solid aluminium which offer extraordinarily good sound, look fabulous and are made to uniquely high standards. The use of aluminium as primary material opens up a wide range of options in terms of sculptural form, surface finish and design which are simply not attainable from cabinets made of wood. Our use of sophisticated extrusion tools enables us to produce extremely rigid cabinets whose internal volume is high in spite of their slender, compact shape.

This in turn allows the speakers to reproduce bass - even very low frequencies - superbly, whilst eliminating any trace of cabinet resonance. Not a single screw is visible in the organically shaped baffle, which is designed to generate a perfect radiation pattern over the full mid/treble range. The resultant imaging characteristics are phenomenally good. Highly developed drivers and the very latest generation of cross-over units are the key to the outstanding sound quality of the new TALIS[®] loudspeakers.

TALIS[®] - the perfect symbiosis of German engineering skill, design and performance.



TALIS® S 300

Floor-standing loudspeaker



The S 300 is a compact floor-standing speaker of great beauty. This unique loudspeaker is just 21 cm wide and 105 cm tall, and typifies the philosophy behind the entire series in terms of technology and sound quality: heavy cabinets made of solid aluminium, high-end speaker drivers and cross-over units, and an open sound image, devoid of distortion, with a wide dynamic range and superb bass response.

The speaker incorporates two newly developed bass drive units of superb quality, fitted with high-performance magnet systems; their triple cone surrounds enabling extremely long cone travel. They are perfectly tailored to the cabinets, and their stiffened cones generate an incredibly deep, high-pressure bass.

The mid-range unit is an ingenious design which provides perfect control of the full vocal range from 300 to 2000 Hz, while its lively, dynamic character creates an outstandingly natural impression. The embossed and stiffened cone is totally devoid of resonances, while a special triple surround eliminates any trace of overshooting.

The new super treble dome unit forms the perfect complement, extending the transmission range up to 30,000 Hz and beyond; it is airy, fast, dynamic and without any trace of edge or hardness.

The sophisticated cross-over unit is assembled using the finest available components. Precisely calculated, fine-tuned for optimum cone travel and transmission characteristics, it has an effortless ability to process extremely high levels, thereby ensuring that all three frequency ranges are superbly controlled.



The speaker terminals are equipped with cable clamps of the highest quality, suitable for bi-wiring and bi-amping. The spikes can be dismantled, and terminate either in pointed metal cones or plastic glide pads for delicate floors.



The new "Ultra Wide Range" treble unit features an embossed cone which makes it extremely rigid despite its ultra-low weight. It is positioned in the centre of a precisely calculated waveguide designed to optimise the driver's radiation characteristics in the mid / high-frequency range.



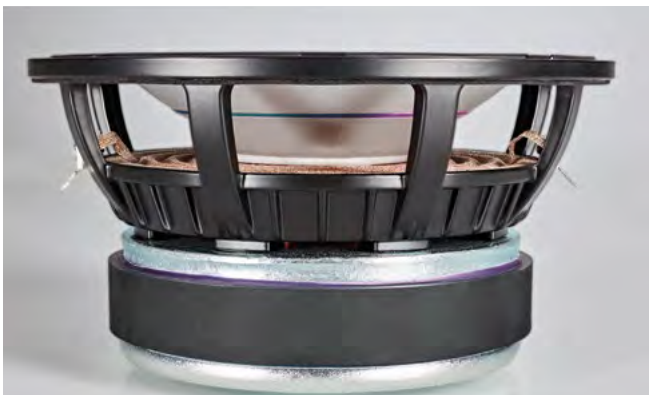
TALIS® R 300

Bookshelf speaker



The R 300 is a compact, beautifully crafted, two-way bookshelf monitor with excellent sound characteristics. The entire cabinet is made of aluminium, hand-brushed, and anodised in high-gloss black or silver. Although only 21 cm wide and just 37 cm tall, the R 300 generates sound of a quality usually the preserve of substantially larger loudspeakers. The high-end drivers are based on the technology of the unit's big sister - the S 300 - but with optimised bass driver parameters to match the small cabinet. The "Ultra Wide Range" treble dome is positioned in the centre of a waveguide whose contours are machined into the solid aluminium baffle itself. In conjunction with the top-quality 170 mm bass driver this design creates exceptionally consistent radiation characteristics, giving a totally convincing feeling of space combined with precise imaging. The sound stage is transparent, totally uncoloured, open, and with a characteristically powerful response in the low bass. The sophisticated cross-over unit maintains a linear frequency response, expands the low bass range and ensures outstanding dispersion characteristics - even when the speaker is set up on a shelf.

The R 300 is equally suitable for mounting on a bookshelf and on the LS 300 stand.



The new bass drivers are based on sophisticated die-cast aluminium baskets fitted with extremely powerful magnets, while the very latest suspension system is the key to their enormous cone travel.



The bass reflex port is located on the back of the speaker; a damper can be fitted if required. Threaded sockets on the underside accept our spikes or furniture glide pads.

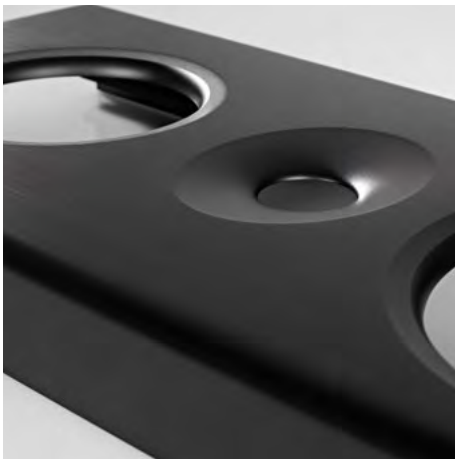


Loudspeaker stand LS 300 as an option





Technology



High End cabinets and drive units

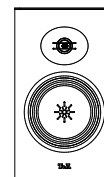
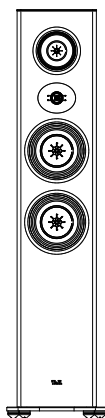
The cabinets are based on profiled aluminium extrusions, and their refined construction is enormously strong and rigid as well as exuding a refined elegance. The thickness of the solid baffle enables us to machine the drive unit openings “organically”, i.e. there are no sharp edges or corners, allowing the sound to expand and detach itself from the speaker without reflections. This is an important factor in the incredibly spacious imaging ability of the TALIS loudspeaker. The all-aluminium construction offers a further advantage: the cabinet walls and cover are significantly thinner than those of wooden equivalents, and this makes it possible to enlarge the internal volume. The cabinets are also very heavy, and substantially stiffer than conventional designs. These two characteristics are extraordinarily important for accurate bass reproduction, because the cabinet

is devoid of the slightest tendency to resonate; there are no resonant effects which could excite the mid-range drivers, and this promotes uncoloured mid-range reproduction. Cabinet-borne sound and all unwanted resonance are eliminated by the special absorbent material which lines the cabinet walls. The substantial weight of the cabinet isolates it from the environment, eliminating the danger of external vibration affecting the loudspeaker. The drive units are the very latest result of our development work, and are perfectly tailored to the cabinets. They are fitted with huge magnets generating enormous force fields, large coils with high power rating, low-profile cone surrounds and extremely deep centring systems, rigid pressure-cast aluminium cradles and stiff cones made in a single piece with multiple stiffening measures. The design provides for unusually long, linear cone excursion. All these features enable TALIS speakers to generate a high-volume, high-pressure sonic image despite their compact dimensions; a level of performance you would normally

expect only from significantly larger loudspeakers. The dispersion behaviour of conventional combined mid-range / treble units is highly frequency-dependent: mid-range drivers typically radiate sound in a very broad pattern in the lower mid-range, but tend increasingly to concentrate the sound at higher frequencies. High-frequency drivers behave analogously. At the transitional frequency between mid-range and treble unit this characteristic results in a sudden change between the concentrated sound of the mid-range unit and the very broad pattern of the treble unit, producing an unwanted effect on the sound stage, and an unsettling vagueness in the spatial image. That is why our “Ultra Wide Range” treble domes operate in a waveguide (sound guide) which is machined into the baffle. Its contours are precisely calculated to ensure that the dispersion characteristics remain smooth even at the transition frequency. Imaging and the sound stage remain stable, with no hint of frequency-dependent inconsistency.



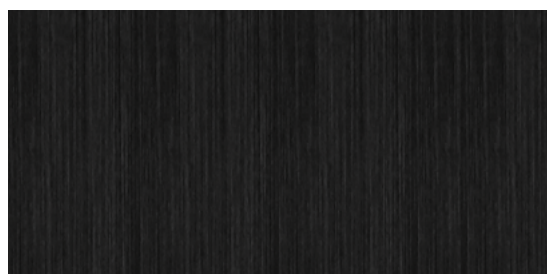
Specifications



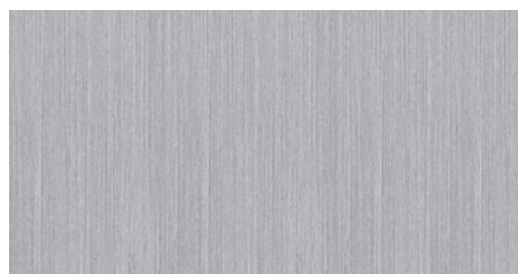
	TALIS® S 300	TALIS® R 300
Principle	Floor-standing speaker, 3-way, bass reflex	Bookshelf speaker, 2-way, bass-reflex
Nominal power rating	200 Watts	140 Watts
Music power rating	270 Watts	200 Watts
Impedance	4 Ohms	4 Ohms
Frequency range	25 - 35000 Hz	35 - 35000 Hz
Sensitivity	87 dB	85 dB
Drive units bass	2 x 170 mm	1 x 170 mm
Drive units midrange	1 x 120 mm	
Drive units highrange	1 x 25 mm	1 x 25 mm
Cross-over frequencies	250 / 2200 Hz	2000 Hz
Dimensions H x W x D incl. terminals	105 x 21 x 28 cm without base 41.4 x 8.3 x 11 inch without base	37 x 21 x 28 cm without base 14.6 x 8.3 x 11 inch without base
Weight	33 kg, 72.7 lb	15 kg, 33.1 lb

Technical modifications reserved

	LS 300
	Loudspeaker stand for TALIS® R 300
Dimensions H x W x D incl. spikes	67 x 26 x 33 cm, 26.4 x 10.2 x 13 inch



Black anodised 42



Silver anodised 43

T+A

T+A elektroakustik GmbH & Co. KG
Planckstraße 9 - 11
D-32052 Herford

T +49 (0) 52 21 / 7676-0
F +49 (0) 52 21 / 7676-76

info@ta-hifi.com
www.ta-hifi.com

T+A est distribué en France par ConceptAs
ta@conceptas.fr - contact@conceptas.fr
www.conceptas.fr
Administratif : +33 6 52 09 59 27
Commercial : +33 6 07 72 63 18

Supported by **SPECTRAL**